



Kanca

RENAULT



ENGINE MOUNTING / MOTOR TAKOZU

Araç / Vehicle	Ref. NR	Açıklama Description
MAGNUM DXI KERAX DXI	7 420 503 551	50 shA



AS. 80154

PREMIUM KERAX DXI	7 420 503 552	40 shA
----------------------	---------------	--------



AS. 80158

MAGNUM PREMIUM KERAX	7 420 499 469	h: 133,5
----------------------------	---------------	----------



AS. 80168

PREMIUM	7 420 499 472	h: 133,5
---------	---------------	----------



AS. 80169

	7 420 796 970 7 420 796 971	h: 129
--	--------------------------------	--------



AS. 80170

SPRING MOUNTING / MAKAS TAKOZU



AS. 80140

Açıklama
Description

Ref. NR

Araç / Vehicle

PREMIUM
PREMIUM 2

7 420 390 836

PREMIUM
PREMIUM 2

ENGINE MOUNTING / MOTOR TAKOZU



AS. 80126

SOL / LEFT
M8X1.5

5 010 316 155

MIDLUM
NEW



AS. 80127

SAĞ / RIGHT
M8X1.5

5 010 460 056

MIDLUM
NEW

SPRING EYE BUSHING / MAKAS BURCU



AS. 80125
AS. 80156

D: Ø 62
d: Ø 24
h: 96

5 010 557 698

PREMIUM
MAGNUM



AS. 80157

D: Ø 62
d: Ø 24
h: 96

7 420 929 989

MAGNUM
PREMIUM
KERAX DXI

BALL JOINT (KIT) / BUGİ BURCU (TAKIM)

Araç / Vehicle	Ref. NR	Açıklama Description
	5 000 814 841	D: Ø 67 d: Ø 15 AX: 100 H: 24



AS. 80151

PREMIUM PREMIUM 2	7 420 547 286	D: Ø 75 d: Ø 19 AX: 115 H: 24
----------------------	---------------	----------------------------------------



AS. 80152

	5 001 836 091	D: Ø 75 d: Ø 19 AX: 130 H: 24
--	---------------	----------------------------------------



AS. 80162

IRISBUS	5 001 850 588 5 000 333 285	D: Ø 85 d: Ø 19 AX: 130 H: 24
---------	--------------------------------	----------------------------------------



AS. 80150

BALL JOINT (KIT) / BUGİ BURCU (TAKIM)



AS. 80153

Açıklama
Description

D: Ø 85
d: Ø 19
AX: 130
H: 30

Ref. NR

5 001 842 823

Araç / Vehicle



AS. 80165

D: Ø 85
d: Ø 21
AX: 130
H: 30

7 420 702 096



AS. 80166

D: Ø 85
d: Ø 21
AX: 152
H: 35

5 001 842 337



AS. 80167

D: Ø 95
d: Ø 21
AX: 130
H: 35

7 420 702 095

KERAX

ŞAFT ASKI TAKIMLARI SHAFT CENTER SUPPORT BEARING

Araç / Vehicle	Ref. NR	Açıklama Description
		Ø : 35 WITHOUT BEARING RULMANSIZ



AS. 80101

MASTER 8.90 JK.60 S.100	770 103 4294 500 056 0295 770 103 4902	Ø : 35 W : 17	HC : 168 H : 61
-------------------------------	----------------------------------------------	------------------	--------------------



AB. 20651

		Ø : 45 WITHOUT BEARING RULMANSIZ
--	--	----------------------------------------



AS. 80103

S.130	500 082 1936 500 024 2914	Ø : 45 W : 19	HC : 194 H : 71,5
-------	------------------------------	------------------	----------------------



AB. 20652

S.130 MIDDLEM	500 082 1936 500 024 2914	Ø : 45 W : 19	HC : 195 H : 71,5
------------------	------------------------------	------------------	----------------------



AB. 20653

ŞAFT ASKI TAKIMLARI SHAFT CENTER SUPPORT BEARING



AB. 20758

Açıklama Description	Ref. NR	Araç / Vehicle
Ø : 45 HC : 194 W : 27 H : 71	500 028 7986	MIDDLUM



AS. 80102

Ø : 50
WITHOUT BEARING
RULMANSIZ



AB. 20655

Ø : 50 HC : 193 W : 20 H : 74	500 058 9888	G.210-G.230 G.260-G.290
----------------------------------------	--------------	----------------------------



AB. 20656

Ø : 50 HC : 194 W : 30 H : 74	500 082 0884 500 087 6246 500 080 7211	PREMIUM - MIDDLUM MENAGER
----------------------------------------	----------------------------------------------	------------------------------



AB. 20657

Ø : 55 HC : 193,6 W : 18 H : 72	500 081 6926 500 081 6927 500 081 6925 500 081 5989 500 102 0496	310/330/370/390/420
------------------------------------------	------------------------------------------------------------------------------	---------------------

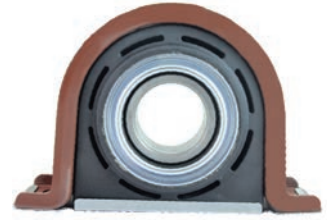
ŞAFT ASKI TAKIMLARI SHAFT CENTER SUPPORT BEARING

Araç / Vehicle	Ref. NR	Açıklama Description
MENAGER R310/R330/R340/R365	5000819188	Ø : 55 HC : 200 W : 18 H : 72



AB. 20662

		Ø : 55 HC : 193 W : 36 H : 71,5
--	--	------------------------------------------



AB. 20607

R.370-R.390-R.420	5000819211 0003997101	Ø : 60 HC : 200 W : 36 H : 82
-------------------	--------------------------	----------------------------------------



AB. 20654

		Ø : 60 WITHOUT BEARING RULMANSIZ TUBE TYPE BORULU TİP
--	--	-------------------------------------------------------------------



AS. 80104

	5001866236 7421026452	Ø : 60 HC : 220 W : 36 H : 86
--	--------------------------	----------------------------------------



AB. 20632

DIAPHRAGMS / DİYAFRAMLAR



Fig. 1



Fig. 2



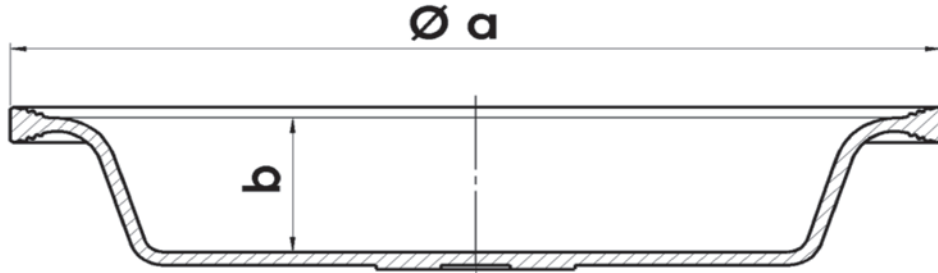
Fig. 3



Fig. 4



Fig. 5



ÜRÜN KODU / PRODUCT CODE	ÜRÜN İSMİ / PRODUCT NAME	ŞEKİL / FIGURE	ÇAP / DIAMETER Ø a	DERİNLİK / DEPTH b
AA.10611	T.9 DİYAFRAM	Fig.1	129	25
AA.10610	T.12 DİYAFRAM	Fig.1	140	28
AA.10614	T.14 DİYAFRAM	Fig.1	145	30
AA.10608	T.16 DİYAFRAM	Fig.1	159	32
AA.10606	T.20 DİYAFRAM	Fig.1	168	32
AA.10604	T.24 DİYAFRAM	Fig.1	179	32
AA.10613	T.27 DİYAFRAM	Fig.1	201	34
AA.10603	T.30 DİYAFRAM	Fig.1	201	32
AA.10619	T.30 M DİYAFRAM	Fig.1	201	36
AA.10601	T.36 DİYAFRAM	Fig.1	224	42
AA.10617	T.9 LS DERİN DİYAFRAM	Fig.2	129	32
AA.10616	T.12 LS DERİN DİYAFRAM	Fig.2	140	34
AA.10612	T.14 LS DERİN DİYAFRAM	Fig.2	145	36
AA.10609	T.16 LS DERİN DİYAFRAM	Fig.2	159	44
AA.10607	T.20 LS DERİN DİYAFRAM	Fig.2	168	44
AA.10605	T.24 LS DERİN DİYAFRAM	Fig.2	179	44
AA.10615	T.27 LS DERİN DİYAFRAM	Fig.2	201	44
AA.10602	T.30 LS DERİN DİYAFRAM	Fig.2	201	44
AA.10620	T.36 LS DERİN DİYAFRAM	Fig.2	224	44
AA.10623	T.24 MEMELİ DİYAFRAM	Fig.3	179	32
AA.10622	T.30 MEMELİ DİYAFRAM	Fig.3	201	32
AA.10621	T.30 LS DERİN MEMELİ DİYAFRAM	Fig.3	201	47
AA.10624	T.12/16 DİYAFRAM	Fig.4	159	33
AA.10625	T.14/16 DİYAFRAM	Fig.4	159	33
AA.10627	T.16 S TİPİ DİYAFRAM	Fig.5	159	27
AA.10626	T.20 S TİPİ DİYAFRAM	Fig.5	170	25
AA.10628	T.24 S TİPİ DİYAFRAM	Fig.5	179	25

FOR OTHER TYPES OF BRAKE CHAMBER PLEASE CONTACT OUR COMPANY

Araç / Vehicle	O.E.M. NR	Ref. NR	Type
	7420533191 5001866301	423 506 1300 423 506 1310	24 STROKE 65 M16X1.5 Disk Boyu / Disc Length 15 mm
	7420824261	423 506 1040 423 506 0630	24 STROKE 65 M16X1.5 Disk Boyu / Disc Length 15 mm
	7420824262	423 506 1030 423 506 0620	24 STROKE 65 M16X1.5 Disk Boyu / Disc Length 15 mm
	7421483526	423 506 1020 423 506 0640	24 STROKE 65 M16X1.5 Disk Boyu / Disc Length 15 mm



BS0024 20021



BS0024 20022



BS0024 20023



BS0024 20026

FOR OTHER TYPES OF BRAKE CHAMBER PLEASE CONTACT OUR COMPANY

Type	Ref. NR	O.E.M. NR	Araç / Vehicle
------	---------	-----------	----------------



12
STROKE
57

423 103 9000

5021170046
5430053317

M16X1.5

Mil Boyu / Rod Length
186 mm

BS0012 10003



16
STROKE
75

423 104 9000

5021170047

M16X1.5

Mil Boyu / Rod Length
186 mm

BS0016 10013



20
STROKE
57

423 105 1110

5021170048

M16X1.5

Mil Boyu / Rod Length
20 mm

BS0020 10015



20
STROKE
75

423 105 9000

5021170049

M16X1.5

Mil Boyu / Rod Length
186 mm

PREMIUM
ROUTE 385.26
KERAX 385.26
MAGNUM AE 380

BS0020 10020

FOR OTHER TYPES OF BRAKE CHAMBER PLEASE CONTACT OUR COMPANY

Araç / Vehicle	O.E.M. NR	Ref. NR	Type
MAGNUM AE470.19T	38855200 5000809565 0038855200 4231069000 5021170051	423 106 9000	24 STROKE 75 M16X1.5 Mil Boyu / Rod Length 186 mm
	7420872026	423 109 0100 423 109 0130	27 STROKE 65 M16X1.5 Mil Boyu / Rod Length 247 mm
	5021170052 5000815361	423 107 9000	30 STROKE 75 M16X1.5 Mil Boyu / Rod Length 186 mm
	5010422317	925 426 3000	14/16 D/P STROKE 57/57 M22X1.5 Disk Boyu / Disc Length 15 mm



BS0024 10023



BS0027 10030



BS0030 10037



BP1416 20404

FOR OTHER TYPES OF BRAKE CHAMBER PLEASE CONTACT OUR COMPANY

Type	Ref. NR	O.E.M. NR	Araç / Vehicle
------	---------	-----------	----------------



BP1416 20405

14/16
D/P
STROKE
57/57
M22X1.5

925 426 3010

5010422318

Disk Boyu / Disc Length
15 mm



BP1616 20406

16/16
D/P
STROKE
57/57
M22X1.5

925 424 8000

5010422319

Disk Boyu / Disc Length
15 mm



BP2024 20429

20/24
D/P
STROKE
65/65
M22X1.5

925 460 0740

5010525321

Disk Boyu / Disc Length
15 mm



BP2424 20440

24/24
D/P
STROKE
65/65
M16X1.5

925 481 0040
925 481 0500
925 481 3600
925 481 3620

7421596229
7421401943

Disk Boyu / Disc Length
15 mm

FOR OTHER TYPES OF BRAKE CHAMBER PLEASE CONTACT OUR COMPANY

Araç / Vehicle	O.E.M. NR	Ref. NR	Type
	7420809444	925 481 1170	24/24 D/P STROKE 65/65 M16X1.5 Disk Boyu / Disc Length 15 mm
	5001848403		20/30 D/P STROKE 75/75 M16X1.5 Disk Boyu / Disc Length 26 mm
	5001848402		20/30 D/P STROKE 75/75 M16X1.5 Disk Boyu / Disc Length 26 mm
	3177336	925 461 4700	24/30 D/P STROKE 65/65 M16X1.5 Disk Boyu / Disc Length 15 mm



BP2424 20447



BP2030 20452



BP2030 20453



BP2430 20456

FOR OTHER TYPES OF BRAKE CHAMBER PLEASE CONTACT OUR COMPANY

Type	Ref. NR	O.E.M. NR	Araç / Vehicle
------	---------	-----------	----------------



BP2430 20457

24/30

925 481 1210
925 481 1220

7420533192
20533192

D/P
STROKE
65/65
M16X1.5

Disk Boyu / Disc Length
15 mm



BP2430 20458

24/30

925 481 1230
925 481 1200

7420533193

D/P
STROKE
65/65
M16X1.5

Disk Boyu / Disc Length
15 mm



BP2024 10414

20/24

925 490 9250
925 490 9257

5021170332
5000716329
5021170331

D/P
STROKE
57/57
M22X1.5
Adaptor
M16X1,5

Mil Boyu / Rod Length
250 mm



BP2424 10416

24/24

925 491 1410
925 491 1417

5021170336

D/P
STROKE
57/57
M22X1.5
Adaptor
M16X1,5

Mil Boyu / Rod Length
250 mm

FOR OTHER TYPES OF BRAKE CHAMBER PLEASE CONTACT OUR COMPANY



Araç / Vehicle	O.E.M. NR	Ref. NR	Type
	5010260182 1506761R 5021170344 5010260181	925 499 0000 925 499 0007	27/24 D/P STROKE 65/65 M16X1.5 Mil Boyu / Rod Length 250 mm
	25141128	925 492 1010 925 492 1017	30/24 D/P STROKE 65/65 M16X1.5 Mil Boyu / Rod Length 250 mm
	5021170333 5021170334	925 490 1010 925 490 1017	20/30 D/P STROKE 65/65 M16X1.5 Mil Boyu / Rod Length 245 mm
	5021170337 5001829790	925 491 1430 925 491 1437	24/30 D/P STROKE 65/65 M22X1.5 Adaptor M16X1,5 Mil Boyu / Rod Length 250 mm



BP2724 10428



BP3024 10430



BP2030 10433



BP2430 10435

FOR OTHER TYPES OF BRAKE CHAMBER PLEASE CONTACT OUR COMPANY

Type	Ref. NR	O.E.M. NR	Araç / Vehicle
------	---------	-----------	----------------



BP2430 10437

24/30

925 491 1350

7420713923

D/P

925 491 1357

STROKE

925 491 1300

65/65

M16X1.5

Mil Boyu / Rod Lenght

58 mm



BP2430 10438

24/30

925 491 1320

74207923

D/P

925 491 1327

20533205

STROKE

65/65

M16X1.5

Mil Boyu / Rod Lenght

220 mm



BP2730 10443

27/30

925 499 0010

5021170343

D/P

925 499 0017

5010260346

STROKE

5010260347

65/65

5010560184

M22X1.5

5021170342

Adaptor

5010260183

M16X1,5

Mil Boyu / Rod Lenght

250 mm



BP3030 10444

30/30

925 492 1020

5010067834

D/P

925 492 1027

5000590336

STROKE

5010485493

65/65

5000787260

M22X1.5

5021170339

Adaptor

5001822981

M16X1,5

5000716330

Mil Boyu / Rod Lenght

5021170338

250 mm

5001829102

FOR OTHER TYPES OF BRAKE CHAMBER PLEASE CONTACT OUR COMPANY

Araç / Vehicle	O.E.M. NR	Ref. NR	Type
	5010260187 5010260188 5010260348 5010260349 5001837094 5001837097 5010260186	925 492 1030 925 492 1037	30/30 D/P STROKE 65/65 M22X1.5 Adaptor M16X1,5 Mil Boyu / Rod Lenght 250 mm
	5021170324	925 376 2000 925 376 0050 925 361 1000	24/30 D/D STROKE 64/64 M16X1.5 Mil Boyu / Rod Lenght 225 mm
	5021170326	925 371 2000 925 371 3000 925 376 0000 925 376 1000	24/30 D/D STROKE 75/75 M16X1.5 Mil Boyu / Rod Lenght 215 mm
	5021170325	925 362 1000 925 377 0020 925 377 2000	30/30 D/D STROKE 64/64 M16X1.5 Mil Boyu / Rod Lenght 225 mm



BP3030 10445



BD2430 10208



BD2430 10216



BD3030 10224

FOR OTHER TYPES OF BRAKE CHAMBER PLEASE CONTACT OUR COMPANY

