



Kanca

IVECO



BALL JOINT (KIT) / BUGİ BURCU (TAKIM)

Araç / Vehicle	Ref. NR	Açıklama Description
	42535445	D: Ø 67 d: Ø 15 AX: 100 H: 24



NN.20110

	42535045	D: Ø 67 d: Ø 17 AX: 115 H: 24
--	----------	--



NN.20111

	504001436	D: Ø 67 d: Ø 19 AX: 115 H: 24
--	-----------	--



NN. 20109

STRALIS	42552295	D: Ø 67 d: Ø 19 AX: 130 H: 24
---------	----------	--



NN.20112

BALL JOINT (KIT) / BUGİ BURCU (TAKIM)



NN. 20101

**Açıklama
Description**

D: Ø 67
d: Ø 19
AX: 130
H: 24

Ref. NR

93163617

Araç / Vehicle

EUROTECH



NN. 20102

D: Ø 75
d: Ø 19
AX: 130
H: 24

93192361

STRALIS
EUROSTAR
EUROTRAKKER
EUROCARGO
EUROTECH
90 E, 100 E, 130 E
MH 260, MP 190
MT 400, LD440



NN. 20107

D: Ø 75
d: Ø 19
AX: 130
H: 24

5000333285
42536819

BUS
IRISBUS



NN.20113

D: Ø 75
d: Ø 19
AX: 130
H: 24

500333284

STRALIS
EUROSTAR
EUROTECH

BALL JOINT (KIT) / BUGİ BURCU (TAKIM)

Araç / Vehicle	Ref. NR	Açıklama Description
	42535779	D: Ø 75 d: Ø 21 AX: 130 H: 24



NN.20114

STRALIS EUROSTAR EUROTECH EUROTRAKKER	093161960	D: Ø 75 d: Ø 21 AX: 130 H: 24
--	-----------	--



NN. 20108

	42488722	D: Ø 85 d: Ø 19 AX: 130 H: 30
--	----------	--



NN. 20103

	42535204	D: Ø 85 d: Ø 21 AX: 130 H: 30
--	----------	--



NN. 20104

BALL JOINT (KIT) / BUGİ BURCU (TAKIM)



NN. 20105

**Açıklama
Description**

D: Ø 85
d: Ø 21
AX: 152
H: 24

Ref. NR

93192618

Araç / Vehicle

EURO CARGO
EURO STAR
EURO TECH
P/PA



NN. 20106

D: Ø 95
d: Ø 21
AX: 152
H: 24

42493431
93192619

EUROTRAKKER

**ŞAFT ASKI TAKIMLARI
SHAFT CENTER SUPPORT BEARING**

Araç / Vehicle	Ref. NR	Açıklama Description
FIAT IVECO DAILY GRINTA	9984261 9932698	Ø : 35 HC : 168 W : 17 H : 61



AB. 20383

35.9- 35.10 TURBO 49.10- 60.10 60.11 TURBO ZETA 65.9 ZETA 65.10- 70.10	4390495 92536526	Ø : 35 HC : 168 W : 17 H : 61
--	---------------------	--



AB. 20384

NEW DAILY TURBO DAILY BO-FROST BUS NEW DAILY	93160324	Ø : 35 HC : 168,4 W : 17 H : 59
---	----------	--



AB. 20771

NEW DAILY TURBO DAILY DAILY BUS NEW DAILY	93163376 93160324	Ø : 35 HC : 170 W : 25 H : 59
--	----------------------	--



AB. 20769

	93163376	Ø : 35 HC : 168 W : 25 H : 58
--	----------	--



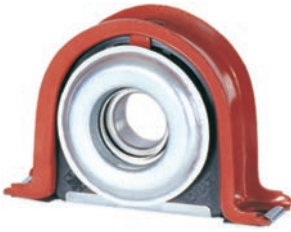
AB. 20360

ŞAFT ASKI TAKIMLARI SHAFT CENTER SUPPORT BEARING



AB. 20772

Açıklama Description	Ref. NR	Araç / Vehicle
Ø : 35 HC : 170 W : 25 H : 59	93160324 42536726	



AB. 20381

Ø : 40 HC : 168,4 W : 18 H : 65	42536965 5687637 93160223	M.23 - M25 416 A
------------------------------------	---------------------------------	---------------------



AB. 20377

Ø : 40 HC : 168,4 W : 18 H : 65	4682902-B	65.9
------------------------------------	-----------	------



AN. 90108

Ø : 40 WITHOUT BEARING RULMANSIZ		FIAT
--	--	------



AB. 20362

Ø : 40 HC : 168,4 W : 18 H : 65	6455173	FIAT 50NC-80NC-90NC 100NC-100EC-100EC2
------------------------------------	---------	--

ŞAFT ASKI TAKIMLARI
SHAFT CENTER SUPPORT BEARING

Araç / Vehicle	Ref. NR	Açıklama Description
FIAT 35NC-673N	994167	Ø : 40 HC : 168,4 W : 18 H : 65



AB. 20364

EURO CARGO	93160223 42536965	Ø : 40 HC : 168,4 W : 18 H : 65
------------	----------------------	------------------------------------



AB. 20751

TURBO DAILY BUS TURBO DAILY	42554407 42561251 42565254	Ø : 40 HC : 170 W : 18 H : 61,5 TUBE TYPE / BORULU TİP
--------------------------------	----------------------------------	--



AB. 20770

TURBO DAILY BUS TURBO DAILY	42530546 42561251	Ø : 40 HC : 170 W : 22 H : 61,5 TUBE TYPE / BORULU TİP
--------------------------------	----------------------	--



AB. 20773

	93158202	Ø : 40 HC : 170 W : 22 H : 61,5
--	----------	------------------------------------



AB. 20781

ŞAFT ASKI TAKIMLARI SHAFT CENTER SUPPORT BEARING



AB. 20380

Açıklama Description	Ref. NR	Araç / Vehicle
Ø : 40 HC : 168,4 W : 27 H : 65	989085 42532794	M.23-M.25 BUS 308-309A 314/2-314/3



AB. 20361

Açıklama Description	Ref. NR	Araç / Vehicle
Ø : 40 HC : 168,4 W : 27 H : 65	4655173	FIAT 50NC-100EC 645 650N-650N1-N2-N3



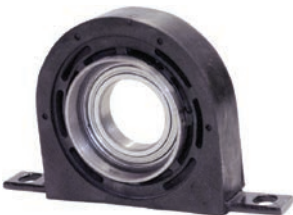
AB. 20363

Açıklama Description	Ref. NR	Araç / Vehicle
Ø : 40 HC : 168,4 W : 27 H : 65	994167 989085 4687637 42532794	FIAT 35NC-100NC 955N1 80NC 90NC-662 N2 662 N3-672 N1 673 N-416 A



AN. 90116

Açıklama Description	Ref. NR	Araç / Vehicle
Ø : 45 WITHOUT BEARING RULMANSIZ	994167	NEW DAILY



AB. 20387

Açıklama Description	Ref. NR	Araç / Vehicle
Ø : 45 HC : 168 W : 16 H : 58,5	93156460 093156460	NEW DAILY TURBO DAILY BUS NEW DAILY

**ŞAFT ASKI TAKIMLARI
SHAFT CENTER SUPPORT BEARING**

Araç / Vehicle	Ref. NR	Açıklama Description	
FIAT			
EURO CARGO	42536523	Ø : 45	HC : 194
TURBO ZETA	4682902		
ZETA	42534452	W : 19	H : 71,5
BUS A70.14			



AB. 20754

NEW DAILY	93156460	Ø : 45	HC : 168
TURBO DAILY	42538439		
DAILY	93157025	W : 19	H : 58,5
BUS NEW DAILY			



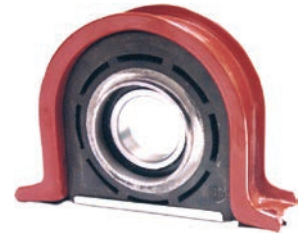
AB. 20385

FIAT			
79.13-79.14-80.13-90.13	4614631	Ø : 45	HC : 193,6
95.14-100.13-109.14-111NC	4639052		
115.17-120.13-120.14-135.14	4622213	W : 19	H : 69
135.17-140.14-140.20-150NC17	93160226		
150NC20-159NC17			



AB. 20763

NEW DAILY		Ø : 45	HC : 164
TURBO DAILY		W : 19	H : 59,5



AB. 20365

EURO CARGO		Ø : 45	HC : 193
100E24-120/130-E15-E18	93158251	W : 27	H : 71
E23E150E-15E-18(D)			



AB. 20366

ŞAFT ASKI TAKIMLARI SHAFT CENTER SUPPORT BEARING



AN. 90113

Açıklama Description	Ref. NR	Araç / Vehicle
Ø : 50 WITHOUT BEARING RULMANSIZ		



AB. 20901

Ø : 50 HC : 193 W : 20 H : 74	4765836	FIAT AUTO CARRI VARIOUS TRUCK
--	---------	-------------------------------------



AB. 20902

Ø : 50 HC : 193 W : 20 H : 74	4503320	FIAT 643 EP
--	---------	----------------



AN. 90117

Ø : 55 WITHOUT BEARING RULMANSIZ		FIAT
--	--	------

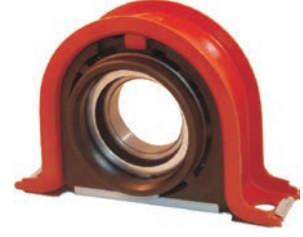


AB. 20777

Ø : 55 HC : 200 W : 18 H : 72	42541440 93163091	
--	----------------------	--

ŞAFT ASKI TAKIMLARI
SHAFT CENTER SUPPORT BEARING

Araç / Vehicle	Ref. NR	Açıklama Description
	42532291 42538366	Ø : 55 HC : 168,4 W : 18 H : 62



AB. 20779

BUS A175.24 EURO TECH EURO CARGO	8194600 42536524 93160517	Ø : 55 HC : 195 W : 18 H : 72
--	---------------------------------	--



AB. 20376

BUS 331A VARIOUS BUS	4674953 93163091	Ø : 55 HC : 193,6 W : 18 H : 72
-------------------------	---------------------	--



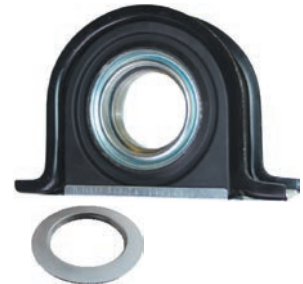
AB. 20755

FIAT 619 M1 N1 P 691	4690354	Ø : 55 HC : 193,6 W : 18 H : 72
-------------------------	---------	--



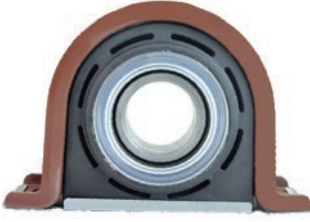
AB. 20756

	42002123	Ø : 55 HC : 200 W : 36 H : 71,5
--	----------	--



AB. 20778

ŞAFT ASKI TAKIMLARI SHAFT CENTER SUPPORT BEARING



AB. 20378

Açıklama Description	Ref. NR	Araç / Vehicle
Ø : 55 HC : 193 W : 36 H : 71,5 TUBE TYPE / BORULU TİP	2483546	



AN. 90114

Ø : 60 WITHOUT BEARING RULMANSIZ		FIAT
--	--	------



AB. 20753

Ø : 60 HC : 193 W : 18 H : 69 TUBE TYPE / BORULU TİP	42532295 42538367	
--	----------------------	--



AB. 20768

Ø : 60 HC : 220 W : 20 H : 88 CAST IRON / DÖKÜM	93157125	TURBO TECH 190.36 240.36/26-230.36 TURBO STAR 190.36/42 240.36-260.36
---	----------	---



AB. 20759

Ø : 60 HC : 220 W : 22 H : 87	93157125	
----------------------------------	----------	--

ŞAFT ASKI TAKIMLARI
SHAFT CENTER SUPPORT BEARING

Araç / Vehicle	Ref. NR	Açıklama Description	
190.26-190.30-190.35 190.38-170.26-170.33	93191989	Ø : 60	HC : 200
	4803933		
	4473133		
	42077882	W : 36	H : 82
	42541438		
	41932125		
42002125	TUBE TYPE / BORULU TİP		



AB. 20752

	93157626	Ø : 60	HC : 220
	42536961	W : 36	H : 86



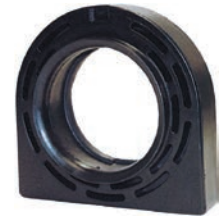
AB. 20760

TURBO STAR 190.42-240.36-260.36 TURBO TECH 190.36-240.36-230.36 EURO TECH 180.E34/E42-190.E24	93157626	Ø : 60	HC : 220
		W : 36	H : 88
		CAST IRON / DÖKÜM	



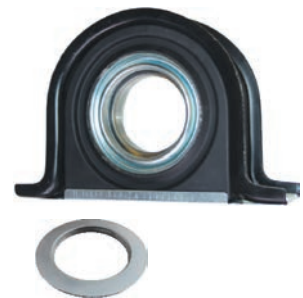
AB. 20767

FIAT	Ø : 60	Ø : 70
	WITHOUT BEARING RULMANSIZ	



AN. 90115

EURO CARGO EURO TECH	93194978	Ø : 65	HC : 200
		W : 18	H : 73,5



AB. 20774

ŞAFT ASKI TAKIMLARI SHAFT CENTER SUPPORT BEARING



AB. 20782

Açıklama Description		Ref. NR	Araç / Vehicle
Ø : 65	HC : 230		EURO CARGO
W : 23	H : 85		



AB. 20757

Açıklama Description		Ref. NR	Araç / Vehicle
Ø : 70	HC : 220	GWB 42087542	190.30T-190.33T 190.36T-190.38 190.42-190.48
W : 20	H : 86		



AB. 20761

Açıklama Description		Ref. NR	Araç / Vehicle
Ø : 70	HC : 220	42087542 42541437 701756	190.30-190.38-190.33 33P-190.36-36P-190.42-42P 190.48-220.38-240.30-240.38
W : 20	H : 86		



AB. 20780

Açıklama Description		Ref. NR
Ø : 70	HC : 220	42539442
W : 20	H : 85	



AB. 20764

Açıklama Description		Ref. NR	Araç / Vehicle
Ø : 70	HC : 220	93163689	EURO TECH EURO STAR EURO TRAKKER
W : 20	H : 88		
CAST IRON / DÖKÜM			

ŞAFT ASKI TAKIMLARI
SHAFT CENTER SUPPORT BEARING

Araç / Vehicle	Ref. NR	Açıklama Description	
EURO TECH			
180E 34-E38-E42-190E 34	42536963	Ø : 70	HC : 220
E38-E42-240E 38-E42	93163689		
260E 38-E42-400E 34-E42	93190884	W : 22	H : 85
440E 34-E38-E42			



AB. 20762

TURBO STAR		Ø : 70	HC : 220
TURBO TECH	42087410	W : 43	H : 88
EURO STAR	42536962		
EURO TRAKKER			
		CAST IRON / DÖKÜM	



AB. 20765

	93192572	Ø : 75	HC : 220
	42538361	W : 20	H : 85



AB. 20775

	42538361	Ø : 75	HC : 220
		W : 20	H : 85



AB. 20766

	42543603	Ø : 85	HC : 220
		W : 13	H : 85



AB. 20783

ŞAFT ASKI TAKIMLARI
SHAFT CENTER SUPPORT BEARING



AB. 20776

Açıklama Description	Ref. NR	Araç / Vehicle
Ø : 100 HC : 193,5 W : 13 H : 85	93192009	EURO CARGO TURBO TECH

DIAPHRAGMS / DİYAFLAMLAR



Fig. 1



Fig. 2



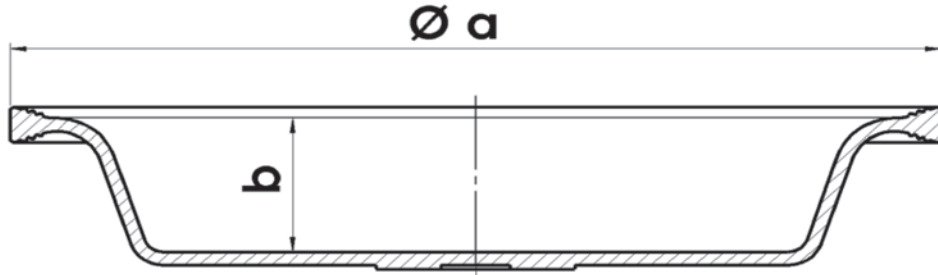
Fig. 3



Fig. 4







Fig. 5



ÜRÜN KODU / PRODUCT CODE	ÜRÜN İSMİ / PRODUCT NAME	ŞEKİL / FIGURE	ÇAP / DIAMETER Ø a	DERİNLİK / DEPTH b
AA.10611	T.9 DİYAFLAM	Fig.1	129	25
AA.10610	T.12 DİYAFLAM	Fig.1	140	28
AA.10614	T.14 DİYAFLAM	Fig.1	145	30
AA.10608	T.16 DİYAFLAM	Fig.1	159	32
AA.10606	T.20 DİYAFLAM	Fig.1	168	32
AA.10604	T.24 DİYAFLAM	Fig.1	179	32
AA.10613	T.27 DİYAFLAM	Fig.1	201	34
AA.10603	T.30 DİYAFLAM	Fig.1	201	32
AA.10619	T.30 M DİYAFLAM	Fig.1	201	36
AA.10601	T.36 DİYAFLAM	Fig.1	224	42
AA.10617	T.9 LS DERİN DİYAFLAM	Fig.2	129	32
AA.10616	T.12 LS DERİN DİYAFLAM	Fig.2	140	34
AA.10612	T.14 LS DERİN DİYAFLAM	Fig.2	145	36
AA.10609	T.16 LS DERİN DİYAFLAM	Fig.2	159	44
AA.10607	T.20 LS DERİN DİYAFLAM	Fig.2	168	44
AA.10605	T.24 LS DERİN DİYAFLAM	Fig.2	179	44
AA.10615	T.27 LS DERİN DİYAFLAM	Fig.2	201	44
AA.10602	T.30 LS DERİN DİYAFLAM	Fig.2	201	44
AA.10620	T.36 LS DERİN DİYAFLAM	Fig.2	224	44
AA.10623	T.24 MEMELİ DİYAFLAM	Fig.3	179	32
AA.10622	T.30 MEMELİ DİYAFLAM	Fig.3	201	32
AA.10621	T.30 LS DERİN MEMELİ DİYAFLAM	Fig.3	201	47
AA.10624	T.12/16 DİYAFLAM	Fig.4	159	33
AA.10625	T.14/16 DİYAFLAM	Fig.4	159	33
AA.10627	T.16 S TİPİ DİYAFLAM	Fig.5	159	27
AA.10626	T.20 S TİPİ DİYAFLAM	Fig.5	170	25
AA.10628	T.24 S TİPİ DİYAFLAM	Fig.5	179	25

FOR OTHER TYPES OF BRAKE CHAMBER PLEASE CONTACT OUR COMPANY

Type	Ref. NR	O.E.M. NR	Araç / Vehicle
 <p>12 STROKE 57 M16X1.5 Disk Boyu / Disc Lenght 15 mm</p>		41211446 41031955	
<p>BS0012 20002</p>			
 <p>24 STROKE 65 M16X1.5 Disk Boyu / Disc Lenght 15 mm</p>	423 506 0010	500590336	
<p>BS0024 20020</p>			
 <p>20 STROKE 75 M16X1.5 Mil Boyu / Rod Lenght 186 mm</p>	423 105 9000	3345107R1	
<p>BS0020 10020</p>			
 <p>24 STROKE 75 M16X1.5 Mil Boyu / Rod Lenght 186 mm</p>	423 106 9000	3345108R1	
<p>BS0024 10023</p>			

FOR OTHER TYPES OF BRAKE CHAMBER PLEASE CONTACT OUR COMPANY

Araç / Vehicle	O.E.M. NR	Ref. NR	Type
----------------	-----------	---------	------

TURBO TECH TURBO STOR	4464477 04452022 02520947 04462022 04713104 04724488 61598729	423 142 0010	9 STROKE 44,5 M16X1.5 Boru Boyu / Tube Length 138 mm
--------------------------	---	--------------	--


BS0009 30001

	4835038	423 143 2000	12 STROKE 51 M16X1.5 Boru Boyu / Tube Length 187 mm
--	---------	--------------	---


BS0012 30007





	500337674	925 424 8000	16/16 D/P STROKE 57/57 M22X1.5 Disk Boyu / Disc Length 15 mm
--	-----------	--------------	--


BP1616 20406

	02486891	925 490 9250 925 490 9257	20/24 D/P STROKE 57/57 M22X1.5 Adaptor M16X1,5 Mil Boyu / Rod Length 250 mm
--	----------	------------------------------	---


BP2024 10414

FOR OTHER TYPES OF BRAKE CHAMBER PLEASE CONTACT OUR COMPANY

Type	Ref. NR	O.E.M. NR	Araç / Vehicle
 <p>24/24 D/P STROKE 57/57 M22X1.5 Adaptor M16X1,5 Mil Boyu / Rod Lenght 250 mm</p>	<p>925 491 1410 925 491 1417</p>	<p>4778653 99458093 99458094 04778653</p>	
 <p>27/30 D/P STROKE 65/65 M22X1.5 Adaptor M16X1,5 Mil Boyu / Rod Lenght 250 mm</p>	<p>925 499 0010 925 499 0017</p>	<p>503135324</p>	
 <p>30/30 D/P STROKE 65/65 M22X1.5 Adaptor M16X1,5 Mil Boyu / Rod Lenght 250 mm</p>	<p>925 492 1020 925 492 2027</p>	<p>5000869541</p>	
 <p>12/6200 D/P STROKE 53/53 M16X1.5 Boru Boyu / Tube Lenght 187 mm</p>	<p>423 327 0640</p>	<p>42072532</p>	<p>TURBO TECH TURBO STOR</p>

FOR OTHER TYPES OF BRAKE CHAMBER PLEASE CONTACT OUR COMPANY

Araç / Vehicle	O.E.M. NR	Ref. NR	Type
----------------	-----------	---------	------

16/24

D/P

STROKE
53/53

M16X1.5

Boru Boyu / Tube Length
190 mm



BP1624 30413

8169241
08169241

20/24

D/P

STROKE
53/53

M16X1.5

Boru Boyu / Tube Length
180 mm



BP2024 30418

20/24

D/P

STROKE
53/53

M16X1.5

Boru Boyu / Tube Length
190 mm



BP2024 30420

24/24

D/P

STROKE
57/57

M16X1.5

Boru Boyu / Tube Length
194 mm



BP2424 30421

FOR OTHER TYPES OF BRAKE CHAMBER PLEASE CONTACT OUR COMPANY

Type**Ref. NR****O.E.M. NR****Araç / Vehicle****24/24****D/P**
STROKE
57/57

M16X1.5

Boru Boyu / Tube Length

275 mm

**BP2424 30422****FOR OTHER TYPES OF BRAKE CHAMBER PLEASE CONTACT OUR COMPANY**