



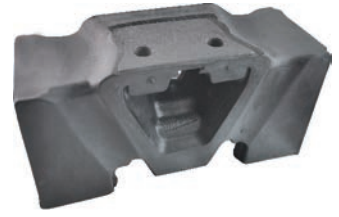
Kanca

DAF



ENGINE MOUNTING / MOTOR TAKOZU

Araç / Vehicle	Ref. NR	Açıklama Description
F 2800 F 3300 F 3600	295669 0512681	2 HOLES WITHOUT METAL ALT BAĞLANTISIZ ARKA/REAR M14X1.5

**AO. 90315**

	295669 0512681	2 HOLES WITH METAL ALT BAĞLANTILI REINFORCED TAKVİYELİ ARKA/REAR M14X1.5
--	-------------------	--

**AO. 90352**

F 2800 F 3300 F 3600	295669	4 HOLES WITH METAL ALT BAĞLANTILI REINFORCED TAKVİYELİ ARKA/REAR M14X1.5
----------------------------	--------	--

**AO. 90316**

BALL JOINT (KIT) / BUGİ BURCU (TAKIM)



AO.90349

Açıklama
Description

D: Ø 67
d: Ø 17
AX: 115
H: 24

Ref. NR

1243618

Araç / Vehicle

75CF
85CF
XF95
XF105



AO.90346

D: Ø 67
d: Ø 19
AX: 130
H: 24

1321936

75CF
85CF



AO.90341

D: Ø 75
d: Ø 17
AX: 115
H: 24

0689748
689748

75CF
85CF
95FA



AO.90347

D: Ø 75
d: Ø 19
AX: 130
H: 24

0067354
067354

F2100
F2300
F2700
F2800
F2900
F3200
F3600

BALL JOINT (KIT) / BUGİ BURCU (TAKIM)

Araç / Vehicle	Ref. NR	Açıklama Description
85CF F2100	1252284	D: Ø 75 d: Ø 21 AX: 130 H: 24


AO. 90348

85FT XF105 95FT F2100 95XF F2300 CF55 F2500 CF65 F2700 CF75	1376729	D: Ø 75 d: Ø 23 AX: 152 H: 24
--	---------	--


AO. 90317

S2000 12.152 12.232 14.162 14.272	0689749 689749	D: Ø 85 d: Ø 19 AX: 130 H: 30
---	-------------------	--


AO. 90342

85 CF, 85FT, 95FX F2100, F2300 F2500, F2700	0513757 0691709 513757 691709	D: Ø 85 d: Ø 21 AX: 130 H: 30
---	--	--


AO. 90343

BALL JOINT (KIT) / BUGİ BURCU (TAKIM)



AO. 90344

Açıklama
Description

D: Ø 85
d: Ø 21
AX: 152
H: 24

Ref. NR

0691703
691703

Araç / Vehicle

F2100, F2300
F2500, F2700
F2900, F3200
F3600



AO.90351

D: Ø 85
d: Ø 23
AX: 152
H: 24

0698724

85CF
95XF



AO. 90345

D: Ø 95
d: Ø 23
AX: 152
H: 35

0696321

F2100, F2300, F2500
F2700, F2900, F3200
F3600

ŞAFT ASKI TAKIMLARI
SHAFT CENTER SUPPORT BEARING

Araç / Vehicle	Ref. NR	Açıklama Description
		Ø : 35 RULMANSIZ WITHOUT BEARING



AO. 90310

F700 F900	608924	Ø : 35 HC : 168 W : 17 H : 61
-----------	--------	--



AB. 20611

		Ø : 40 RULMANSIZ WITHOUT BEARING
--	--	--



AO. 90311

XF105	541791	Ø : 40 HC : 170 W : 22 H : 61,5
-------	--------	--



AB. 20626

1410 1480 1510 1600 82-84 MODELS	1404554	Ø : 40 HC : 168,4 W : 27 H : 65
--	---------	--



AB. 20617

ŞAFT ASKI TAKIMLARI
SHAFT CENTER SUPPORT BEARING



AB. 20620

Açıklama Description	Ref. NR	Araç / Vehicle
Ø : 45 HC : 195 W : 19 H : 71,5	1404560	LF45 LF55



AB. 20677

Ø : 50 HC : 193 W : 20 H : 74



AB. 20621

Ø : 50 HC : 194 W : 30 H : 74	1700326
----------------------------------	---------



AO. 90312

Ø : 55 RULMANSIZ WITHOUT BEARING	2005, 2200, 2205 2305, 2605
--	--------------------------------



AO. 90313

Ø : 55 RULMANSIZ WITHOUT BEARING
--

ŞAFT ASKI TAKIMLARI
SHAFT CENTER SUPPORT BEARING

Araç / Vehicle	Ref. NR	Açıklama Description
2005, 2200 2205, 2305, 2605	1408525 1409221 1409235	Ø : 55 HC : 193,6 W : 18 H : 72

**AB. 20612**

	1252249 1298157	Ø : 55 HC : 200 W : 18 H : 72
--	--------------------	----------------------------------

**AB. 20627**

		Ø : 55 HC : 200 W : 25 H : 82
--	--	----------------------------------

**AB. 20616**

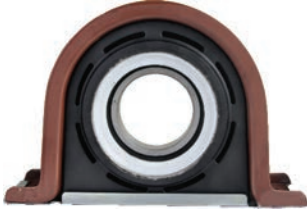
	102203	Ø : 55 HC : 200 W : 36 H : 71,5
--	--------	------------------------------------

**AB. 20625**

		Ø : 60 RULMANSIZ WITHOUT BEARING
--	--	--

**AO. 90307**

ŞAFT ASKI TAKIMLARI
SHAFT CENTER SUPPORT BEARING



AB. 20547

Açıklama Description	Ref. NR	Araç / Vehicle
Ø : 60 HC : 193		
W : 18 H : 69	1409056	
BORULU TİP TUBE TYPE	1782199	



AB. 20613

Ø : 60 HC : 200	12568011457	
W : 22 H : 82		



AB. 20615

Ø : 60 HC : 220		
W : 22 H : 87		



AB. 20628

Ø : 60 HC : 220	1288235	
W : 36 H : 86		

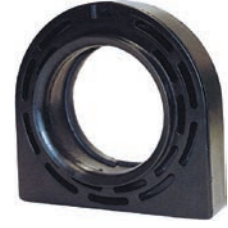


AB. 20614

Ø : 60 HC : 200	102204	BUS
W : 36 H : 82	555364	F28
		N28
		F95

ŞAFT ASKI TAKIMLARI
SHAFT CENTER SUPPORT BEARING

Araç / Vehicle	Ref. NR	Açıklama Description
		Ø : 60 Ø : 70 RULMANSIZ WITHOUT BEARING



AO. 90314

		Ø : 65 RULMANSIZ WITHOUT BEARING
--	--	--



AO. 90309

85, 95, F 85, XF	1779697 1288120 1323765 1435557	Ø : 65 HC : 200 W : 18 H : 82
---------------------	--	--



AB. 20618

F65 65CF 75CF 85CF 95XF	1435557 1288220 1323765 1288120	Ø : 65 HC : 200 W : 18 H : 73,5
-------------------------------------	--	--



AB. 20622

85CF 95XF F85 F95	1235569 0678426 701756	Ø : 70 HC : 220 W : 20 H : 86
----------------------------	------------------------------	--



AB. 20619

ŞAFT ASKI TAKIMLARI
SHAFT CENTER SUPPORT BEARING



AB. 20630

Açıklama Description		Ref. NR	Araç / Vehicle
Ø : 75	HC : 220	1364376	85CF
		1288231	95XF
W : 20	H : 85	1425157	CF75
			CF85



AB. 20624

Ø : 70	HC : 220		CF75IV
W : 43	H : 88	1288242	CF85IV
CAST IRON DÖKÜM			F95
			XF95



AB. 20623

Ø : 75	HC : 220	1779702	XF105
		1740904	CF75IV
W : 20	H : 85	1438919	C85IV
		1608405	

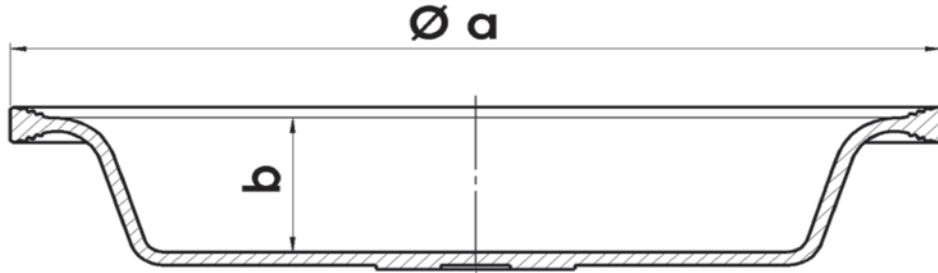
DIAPHRAGMS / DİYAFRAMLAR


Fig. 1

Fig. 2





Fig. 3

Fig. 4

Fig. 5


ÜRÜN KODU / PRODUCT CODE	ÜRÜN İSMİ / PRODUCT NAME	ŞEKİL / FIGURE	ÇAP / DIAMETER Ø a	DERİNLİK / DEPTH b
AA.10611	T.9 DİYAFRAM	Fig.1	129	25
AA.10610	T.12 DİYAFRAM	Fig.1	140	28
AA.10614	T.14 DİYAFRAM	Fig.1	145	30
AA.10608	T.16 DİYAFRAM	Fig.1	159	32
AA.10606	T.20 DİYAFRAM	Fig.1	168	32
AA.10604	T.24 DİYAFRAM	Fig.1	179	32
AA.10613	T.27 DİYAFRAM	Fig.1	201	34
AA.10603	T.30 DİYAFRAM	Fig.1	201	32
AA.10619	T.30 M DİYAFRAM	Fig.1	201	36
AA.10601	T.36 DİYAFRAM	Fig.1	224	42
AA.10617	T.9 LS DERİN DİYAFRAM	Fig.2	129	32
AA.10616	T.12 LS DERİN DİYAFRAM	Fig.2	140	34
AA.10612	T.14 LS DERİN DİYAFRAM	Fig.2	145	36
AA.10609	T.16 LS DERİN DİYAFRAM	Fig.2	159	44
AA.10607	T.20 LS DERİN DİYAFRAM	Fig.2	168	44
AA.10605	T.24 LS DERİN DİYAFRAM	Fig.2	179	44
AA.10615	T.27 LS DERİN DİYAFRAM	Fig.2	201	44
AA.10602	T.30 LS DERİN DİYAFRAM	Fig.2	201	44
AA.10620	T.36 LS DERİN DİYAFRAM	Fig.2	224	44
AA.10623	T.24 MEMELİ DİYAFRAM	Fig.3	179	32
AA.10622	T.30 MEMELİ DİYAFRAM	Fig.3	201	32
AA.10621	T.30 LS DERİN MEMELİ DİYAFRAM	Fig.3	201	47
AA.10624	T.12/16 DİYAFRAM	Fig.4	159	33
AA.10625	T.14/16 DİYAFRAM	Fig.4	159	33
AA.10627	T.16 S TİPİ DİYAFRAM	Fig.5	159	27
AA.10626	T.20 S TİPİ DİYAFRAM	Fig.5	170	25
AA.10628	T.24 S TİPİ DİYAFRAM	Fig.5	179	25

FOR OTHER TYPES OF BRAKE CHAMBER PLEASE CONTACT OUR COMPANY

Type	Ref. NR	O.E.M. NR	Araç / Vehicle
 <p>12 STROKE 57 M16X1.5 Disk Boyu / Disc Lenght 15 mm</p>	423 503 0000	1392259	
BS0012 20001			
 <p>14 STROKE 57 M16X1.5 Disk Boyu / Disc Lenght 15 mm</p>	423 114 7100	1505244	
BS0014 20003			
 <p>16 STROKE 57 M16X1.5 Disk Boyu / Disc Lenght 15 mm</p>	423 104 7100	1505241	
BS0016 20006			
 <p>20 STROKE 57 M16X1.5 Disk Boyu / Disc Lenght 15 mm</p>	423 105 0200	1524853	
BS0020 20007			

FOR OTHER TYPES OF BRAKE CHAMBER PLEASE CONTACT OUR COMPANY

Araç / Vehicle	O.E.M. NR	Ref. NR	Type
2222	1517954	423 505 0000	20 STROKE 62 M16X1.5 Disk Boyu / Disc Lenght 15 mm
	1791409 1373681	423 506 0200	24 STROKE 65 M16X1.5 Disk Boyu / Disc Lenght 15 mm
	1517956	423 506 0010	24 STROKE 65 M16X1.5 Disk Boyu / Disc Lenght 15 mm
PACCAR LEYLAND	1505025 BBU5929	423 103 9000	12 STROKE 57 M16X1.5 Mil boyu / Rod Lenght 186 mm


BS0020 20009

BS0024 20019

BS0024 20020

BS0012 10003

FOR OTHER TYPES OF BRAKE CHAMBER PLEASE CONTACT OUR COMPANY



BS0016 10013

16
STROKE
75

M16X1.5
Mil boyu / Rod Lenght
186 mm

423 104 9000

834481
745398
0834481

LF45-FA45
LF55-FA55



BS0020 10015

20
STROKE
57

M16X1.5
Mil boyu / Rod Lenght
20 mm

423 105 1110

MBU5172
1505026

PACCAR



BS0020 10016

20
STROKE
57

M16X1.5
Mil boyu / Rod Lenght
20 mm

423 105 4090

1505028



BS0020 10020

20
STROKE
75

M16X1.5
Mil boyu / Rod Lenght
186 mm

423 105 9000

0834482
BBU5931
834482

F1900-FA1900DNS
F2500-FT2505DHS

FOR OTHER TYPES OF BRAKE CHAMBER PLEASE CONTACT OUR COMPANY

Araç / Vehicle	O.E.M. NR	Ref. NR	Type
F2500-FA2505DHS LF45-FA45	0834483 834483 BBU5932	423 106 9000	24 STROKE 75 M16X1.5 Mil boyu / Rod Lenght 186 mm
	1522124	423 106 0880	24 STROKE 75 M16X1.5 Mil boyu / Rod Lenght 35 mm
F2300-FAT2305DH F2300-FAT2305DHR	834484 0834484 705707 BBU5933	423 107 9000	30 STROKE 75 M16X1.5 Mil boyu / Rod Lenght 186 mm
	1517953	423 142 0010	9 STROKE 44,5 M16X1.5 Boru Boyu / Tube Lenght 138 mm






BS0024 10023

BS0024 10026

BS0030 10037

BS0009 30001

FOR OTHER TYPES OF BRAKE CHAMBER PLEASE CONTACT OUR COMPANY

Type	Ref. NR	O.E.M. NR	Araç / Vehicle
 14/16 D/P STROKE 57/57 M22X1.5 Disk Boyu / Disc Lenght 15 mm	925 426 3000	1523960	
 16/16 D/P STROKE 57/57 M22X1.5 Disk Boyu / Disc Lenght 15 mm	925 424 8000	1505435	
 16/16 D/P STROKE 57/57 M16X1.5 Disk Boyu / Disc Lenght 15 mm	925 464 4500	1505447	
 12/24 D/P STROKE 57/57 M22X1.5 Disk Boyu / Disc Lenght 15 mm	925 486 0110	1506272	

BP1416 20404

BP1616 20406

BP1616 20407

BP1224 20412

FOR OTHER TYPES OF BRAKE CHAMBER PLEASE CONTACT OUR COMPANY





Araç / Vehicle	O.E.M. NR	Ref. NR	Type
	1506228 1505449	925 486 0100	12/24 D/P STROKE 57/57 M22X1.5 Disk Boyu / Disc Length 15 mm
	1525765	925 488 0120 925 488 0140	14/24 D/P STROKE 57/57 M22X1.5 Disk Boyu / Disc Length 15 mm
	1524500	925 488 0150 925 488 0130	14/24 D/P STROKE 57/57 M22X1.5 Disk Boyu / Disc Length 15 mm
	1517296	925 488 0100	14/24 D/P STROKE 57/57 M22X1.5 Disk Boyu / Disc Length 15 mm


BP1224 20413

BP1424 20414

BP1424 20415

BP1424 20416
FOR OTHER TYPES OF BRAKE CHAMBER PLEASE CONTACT OUR COMPANY

Type	Ref. NR	O.E.M. NR	Araç / Vehicle
 14/24 D/P STROKE 65/65 M22X1.5 Disk Boyu / Disc Length 15 mm	925 488 0000	1505452	
 16/24 D/P STROKE 57/57 M16X1.5 Disk Boyu / Disc Length 15 mm	925 464 5000	1505448	PACCAR
 16/24 D/P STROKE 57/57 M16X1.5 Disk Boyu / Disc Length 15 mm	925 464 5017 925 464 5050 925 464 5010	1518162	PACCAR
 16/24 D/P STROKE 65/65 M22X1.5 Disk Boyu / Disc Length 15 mm	925 484 0100 925 484 0000	1501927 1505446	

FOR OTHER TYPES OF BRAKE CHAMBER PLEASE CONTACT OUR COMPANY

Araç / Vehicle	O.E.M. NR	Ref. NR	Type
	1522314	925 460 0270	20/24 D/P STROKE 57/57 M16X1.5 Disk Boyu / Disc Length 15 mm
	1519190	925 480 0117 925 480 0110	20/24 D/P STROKE 65/65 M22X1.5 Disk Boyu / Disc Length 15 mm
	1519192	925 460 1010	20/24 D/P STROKE 65/65 M16X1.5 Disk Boyu / Disc Length 15 mm
	1505439 1509442	925 480 0040 925 480 0047	20/24 D/P STROKE 65/65 M22X1.5 Disk Boyu / Disc Length 15 mm


BP2024 20424

BP2024 20427

BP2024 20428

BP2024 20430

FOR OTHER TYPES OF BRAKE CHAMBER PLEASE CONTACT OUR COMPANY

Type	Ref. NR	O.E.M. NR	Araç / Vehicle
------	---------	-----------	----------------



BP2024 20431

**20/24
D/P**

925 480 0010
925 480 0050
925 480 0057

1519189
1506681

STROKE
65/65

M22X1.5

Disk Boyu / Disc Length
15 mm



BP2024 20434

**20/24
D/P**

925 460 1300

1518159

STROKE
75/75

M22X1.5

Disk Boyu / Disc Length
20 mm



BP2424 20438

**24/24
D/P**

925 481 0127
925 481 0120
925 481 0100

1519378

STROKE
65/65

M22X1.5

Disk Boyu / Disc Length
15 mm



BP2424 20442

**24/24
D/P**

925 461 2410

1439374

CF65-FA65
CF75-FT75
CF85-FAR85

STROKE
65/65

M22X1.5

Disk Boyu / Disc Length
15 mm

FOR OTHER TYPES OF BRAKE CHAMBER PLEASE CONTACT OUR COMPANY

Araç / Vehicle	O.E.M. NR	Ref. NR	Type
	1608983	925 461 0360	24/24 D/P STROKE 65/65 M22X1.5 Disk Boyu / Disc Lenght 15 mm
	1523961R	925 498 1050 925 498 1057	14/24 D/P STROKE 57/57 M22X1.5 Adaptor M16X1,5 Mil Boyu / Rod Lenght 255 mm
	1518151	925 494 0410 925 494 9600	16/24 D/P STROKE 57/57 M22X1.5 Adaptor M16X1,5 Mil Boyu / Rod Lenght 250 mm
	1506383 1519150	925 490 7550 925 490 7557	20/24 D/P STROKE 57/57 M22X1.5 Adaptor M16X1,5 Mil Boyu / Rod Lenght 250 mm


BP2424 20448

BP1424 10405

BP1624 10408

BP2024 10412

FOR OTHER TYPES OF BRAKE CHAMBER PLEASE CONTACT OUR COMPANY

Type	Ref. NR	O.E.M. NR	Araç / Vehicle
------	---------	-----------	----------------



BP2024 10414

20/24 D/P STROKE 57/57 M22X1.5 Adaptor M16X1,5 Mil Boyu / Rod Lenght 250 mm	925 490 9250	1506797R
	925 490 9257	1519185 1519443



BP2024 10415

20/24 D/P STROKE 65/65 M16X1.5 Mil Boyu / Rod Lenght 38 mm	925 430 0360	1505114R
	925 430 0367	
	925 430 0060	



BP2424 10416

24/24 D/P STROKE 57/57 M22X1.5 Adaptor M16X1,5 Mil Boyu / Rod Lenght 250 mm	925 491 1410	1518145
	925 491 1417	1199428
		867215
		1506655R
		867215
		1199429
		1264634
		1506384
		1519113
		1522228
	1525504	



BP2424 10417

24/24 D/P STROKE 57/57 M22X1.5 Adaptor M16X1,5 Mil Boyu / Rod Lenght 250 mm	925 491 7550	1523549
		1519158

FOR OTHER TYPES OF BRAKE CHAMBER PLEASE CONTACT OUR COMPANY

Araç / Vehicle	O.E.M. NR	Ref. NR	Type
	1505463R	925 431 0950 925 431 0957	24/24 D/P STROKE 65/65 M16X1.5 Mil Boyu / Rod Lenght 247 mm
	1505115R	925 431 0330 925 431 0337	24/24 D/P STROKE 65/65 M16X1.5 Mil Boyu / Rod Lenght 38 mm
	1506761 1298303 1505468R 1270258R 1459619 1459618 1459619R 1459619A 1270257 1270256 1270258	925 499 0000 925 499 0007	27/24 D/P STROKE 65/65 M16X1.5 Mil Boyu / Rod Lenght 250 mm
LEYLAND	0879088R	925 492 1010 925 492 1017	30/24 D/P STROKE 65/65 M16X1.5 Mil Boyu / Rod Lenght 250 mm


BP2424 10422

BP2424 10425

BP2724 10428

BP3024 10430

FOR OTHER TYPES OF BRAKE CHAMBER PLEASE CONTACT OUR COMPANY



BP2030 10433

Type	Ref. NR	O.E.M. NR	Araç / Vehicle
20/30 D/P STROKE 65/65 M16X1.5 Mil Boyu / Rod Length 245 mm	925 490 1010 925 490 1017	1521970R 1521970 1505179R 1506393R 1519186	



BP2030 10434

20/30 D/P STROKE 65/65 M16X1.5 Mil Boyu / Rod Length 245 mm	925 490 1210 925 490 1217	1505499R 1518156 1505117R 1505499R 1505499	
---	------------------------------	--	--



BP2430 10435

24/30 D/P STROKE 65/65 M22X1.5 Adaptor M16X1,5 Mil Boyu / Rod Length 250 mm	925 491 1430 925 491 1437	1459614R 1270270R 1270270 1270270A 1459614R 1519444 0525480 0525480R 0525480A 1459614A 1459614 1270271	
---	------------------------------	---	--



BP2430 10436

24/30 D/P STROKE 65/65 M16X1.5 Mil Boyu / Rod Length 247 mm	925 431 5140 925 431 5147	1505464R	
---	------------------------------	----------	--

FOR OTHER TYPES OF BRAKE CHAMBER PLEASE CONTACT OUR COMPANY

Araç / Vehicle	O.E.M. NR	Ref. NR	Type
	1270272 1519174 1270273 1506563 1519135 1519137 1519141 1506563R 1519142 1519184 1603234 1603235 1504993R	925 499 0010 925 499 0017	27/30 D/P STROKE 65/65 M22X1.5 Adaptor M16X1,5 Mil Boyu / Rod Lenght 250 mm
	1519118R 1374223 0282042 892758 1518149 082042 50018291 1305170 0282042 1270262 1518313 1270262A 1519164 1519165 1506395 1270263	925 492 1020 925 492 1027	30/30 D/P STROKE 65/65 M22X1.5 Adaptor M16X1,5 Mil Boyu / Rod Lenght 250 mm
	1277863A 1518302R 1277863R 1277863 1270263	925 492 1030 925 492 1037	30/30 D/P STROKE 65/65 M22X1.5 Adaptor M16X1,5 Mil Boyu / Rod Lenght 250 mm
	1519124R	925 322 2510 925 322 2517	30/30 D/P STROKE 65/65 M22X1.5 Adaptor M16X1,5 Mil Boyu / Rod Lenght 77 mm



BP2730 10443



BP3030 10444



BP3030 10445



BP3030 10449

FOR OTHER TYPES OF BRAKE CHAMBER PLEASE CONTACT OUR COMPANY

Type	Ref. NR	O.E.M. NR	Araç / Vehicle
------	---------	-----------	----------------



BP3030 10450

**30/30
D/P**

925 322 2410
925 322 2417

1519121
1519122R

STROKE
65/65

M16X1.5

Mil Boyu / Rod Lenght
77 mm



BP1262 30409

**12/6200
D/P**

423 327 0640

1518655

STROKE
53/53

M16X1.5

Boru Boyu / Tube Lenght
187 mm



BD2430 10208

**24/30
D/D**

925 376 2000
925 376 0050
925 361 1000

0883547
0879098
1506381

STROKE
64/64

M16X1.5

Mil Boyu / Rod Lenght
225 mm



BD2430 10209

**24/30
D/D**

925 371 3090
925 376 0030
925 376 1030

0879096

STROKE
75/75

M16X1.5

Mil Boyu / Rod Lenght
170 mm

FOR OTHER TYPES OF BRAKE CHAMBER PLEASE CONTACT OUR COMPANY

Araç / Vehicle	O.E.M. NR	Ref. NR	Type
	0883026 883026	925 376 1020	24/30 D/D STROKE 75/75 M16X1.5 Mil Boyu / Rod Lenght 215 mm
	1325352	925 371 2000 925 371 3000 925 376 0000 925 376 1000	24/30 D/D STROKE 75/75 M16X1.5 Mil Boyu / Rod Lenght 215 mm
	0883545	925 376 1060	24/30 D/D STROKE 75/75 M16X1.5 Mil Boyu / Rod Lenght 210 mm
	1519143 0883549 883549	925 362 1000 925 377 0020 925 377 2000	30/30 D/D STROKE 64/64 M16X1.5 Mil Boyu / Rod Lenght 225 mm


BD2430 10214

BD2430 10216

BD2430 10217

BD3030 10224
FOR OTHER TYPES OF BRAKE CHAMBER PLEASE CONTACT OUR COMPANY



BD3030 10227

Type	Ref. NR	O.E.M. NR	Araç / Vehicle
30/30 D/D STROKE 75/75 M16X1.5 Mil Boyu / Rod Lenght 215 mm	925 372 2000	0883258	
	925 372 3000	883258	
	925 377 0000	0879099	
	925 377 1000	879099	

FOR OTHER TYPES OF BRAKE CHAMBER PLEASE CONTACT OUR COMPANY