



Kanca

BMC



BALL JOINT (KIT) / BUGİ BURCU (TAKIM)

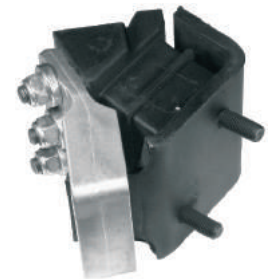
Araç / Vehicle	Ref. NR	Açıklama Description
	53RS700172	D: Ø 85 d: Ø 19 AX: 130 H: 30

**AC. 30304**

		D: Ø 85 d: Ø 19 AX: 130 H: 30
--	--	--

**AC. 30305****ENGINE MOUNTING / MOTOR TAKOZU**

	53RS200211	ÖN / FRONT 1 NUT (SOMUN) 2 BOLTS (CIVATA)
--	------------	---

**AC. 30309**

	53RS201508	ARKA / REAR M18X1.5 M14X1.5
--	------------	-----------------------------------

**AC. 30310**



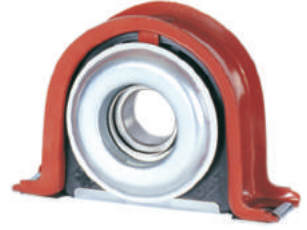
AC. 30311

ENGINE MOUNTING / MOTOR TAKOZU

Açıklama Description	Ref. NR	Araç / Vehicle
ÖN / FRONT M18X1.5 M14X1.5	53RS201507	

ŞAFT ASKI TAKIMLARI
SHAFT CENTER SUPPORT BEARING

Araç / Vehicle	Ref. NR	Açıklama Description	
PICK-UP TM.30	M4C3007	Ø : 35 W : 17	HC : 167 H : 61



AB. 20401

PICK-UP TM.30	M4C3007	Ø : 35 W : 25	HC : 167 H : 61
---------------	---------	------------------	--------------------



AB. 20402

	48-003/35 A	Ø : 35 WITHOUT BEARING RULMANSIZ	
--	-------------	--	--



AC. 30381

		Ø : 55 WITHOUT BEARING RULMANSIZ	
--	--	--	--



AC. 30212

	48-003/60 A	Ø : 45 WITHOUT BEARING RULMANSIZ	
--	-------------	--	--



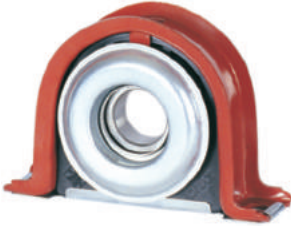
AC. 30211

**ŞAFT ASKI TAKIMLARI
SHAFT CENTER SUPPORT BEARING**



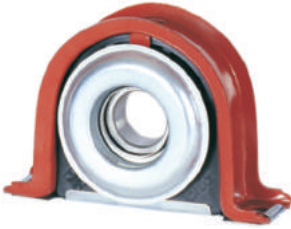
AB. 20404

Açıklama Description		Ref. NR	Araç / Vehicle
Ø : 45	HC : 194	36455A300	FATİH / YAVUZ
W : 19	H : 71,5		162.25 145.25 P518



AB. 20403

Açıklama Description		Ref. NR	Araç / Vehicle
Ø : 45	HC : 194	36455A300	FATİH YAVUZ
W : 27	H : 71		162.25 145.25 P518



AB. 20405

Açıklama Description		Ref. NR	Araç / Vehicle
Ø : 55	HC : 194	Y846854	FATİH
W : 18	H : 76		200.25 162.25



AB. 20414

Açıklama Description		Ref. NR	Araç / Vehicle
Ø : 55	HC : 194		PROFESYONEL
W : 18	H : 76		617



AB. 20412

Açıklama Description		Ref. NR	Araç / Vehicle
Ø : 60	HC : 220	4K11254	FATİH
W : 22	H : 87		220.26 P620 214.26

ŞAFT ASKI TAKIMLARI
SHAFT CENTER SUPPORT BEARING

Araç / Vehicle	Ref. NR	Açıklama Description	
PROFESYONEL 617/620		Ø : 60 W : 22	HC : 220 H : 87



AB. 20415

220.26		Ø : 60 W : 22	HC : 220 H : 87
--------	--	------------------	--------------------



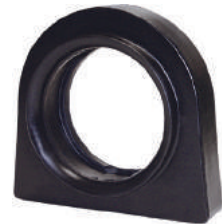
AB. 20413

FATİH 214.26 - 220.26		Ø : 60 WITHOUT BEARING RULMANSIZ	
--------------------------	--	--	--



AC. 30205

PROFESYONEL (FULL TYPE)		Ø : 65 WITHOUT BEARING RULMANSIZ	
----------------------------	--	--	--



AC. 30216

PROFESYONEL 822/827 624	36439	Ø : 65 W : 23	HC : 230 H : 85
-------------------------------	-------	------------------	--------------------



AB. 20416

DIAPHRAGMS / DİYAFLAMLAR



Fig. 1



Fig. 2



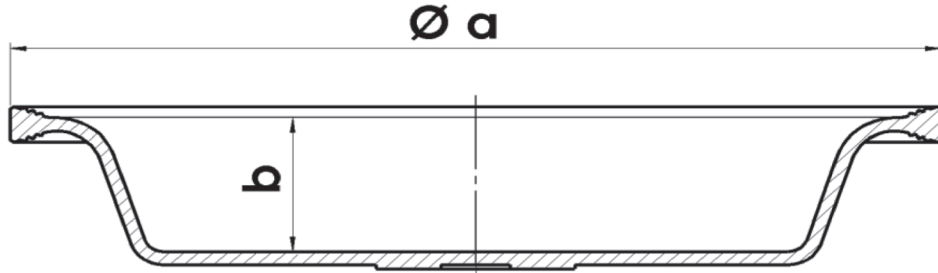
Fig. 3



Fig. 4



Fig. 5



ÜRÜN KODU / PRODUCT CODE	ÜRÜN İSMİ / PRODUCT NAME	ŞEKİL / FIGURE	ÇAP / DIAMETER Ø a	DERİNLİK / DEPTH b
AA.10611	T.9 DİYAFLAM	Fig.1	129	25
AA.10610	T.12 DİYAFLAM	Fig.1	140	28
AA.10614	T.14 DİYAFLAM	Fig.1	145	30
AA.10608	T.16 DİYAFLAM	Fig.1	159	32
AA.10606	T.20 DİYAFLAM	Fig.1	168	32
AA.10604	T.24 DİYAFLAM	Fig.1	179	32
AA.10613	T.27 DİYAFLAM	Fig.1	201	34
AA.10603	T.30 DİYAFLAM	Fig.1	201	32
AA.10619	T.30 M DİYAFLAM	Fig.1	201	36
AA.10601	T.36 DİYAFLAM	Fig.1	224	42
AA.10617	T.9 LS DERİN DİYAFLAM	Fig.2	129	32
AA.10616	T.12 LS DERİN DİYAFLAM	Fig.2	140	34
AA.10612	T.14 LS DERİN DİYAFLAM	Fig.2	145	36
AA.10609	T.16 LS DERİN DİYAFLAM	Fig.2	159	44
AA.10607	T.20 LS DERİN DİYAFLAM	Fig.2	168	44
AA.10605	T.24 LS DERİN DİYAFLAM	Fig.2	179	44
AA.10615	T.27 LS DERİN DİYAFLAM	Fig.2	201	44
AA.10602	T.30 LS DERİN DİYAFLAM	Fig.2	201	44
AA.10620	T.36 LS DERİN DİYAFLAM	Fig.2	224	44
AA.10623	T.24 MEMELİ DİYAFLAM	Fig.3	179	32
AA.10622	T.30 MEMELİ DİYAFLAM	Fig.3	201	32
AA.10621	T.30 LS DERİN MEMELİ DİYAFLAM	Fig.3	201	47
AA.10624	T.12/16 DİYAFLAM	Fig.4	159	33
AA.10625	T.14/16 DİYAFLAM	Fig.4	159	33
AA.10627	T.16 S TİPİ DİYAFLAM	Fig.5	159	27
AA.10626	T.20 S TİPİ DİYAFLAM	Fig.5	170	25
AA.10628	T.24 S TİPİ DİYAFLAM	Fig.5	179	25

FOR OTHER TYPES OF BRAKE CHAMBER PLEASE CONTACT OUR COMPANY

Araç / Vehicle	O.E.M. NR	Ref. NR	Type
----------------	-----------	---------	------

423 505 0000

20

STROKE
62

M16X1.5

Disk Boyu / Disc Length
15 mm



BS0020 20009

423 506 0010

24

STROKE
65

M16X1.5

Disk Boyu / Disc Length
15 mm



BS0024 20020

423 103 9000

12

STROKE
57

M16X1.5

Mil Boyu / Rod Length
186 mm



BS0012 10003

423 105 1110

20

STROKE
57

M16X1.5

Mil Boyu / Rod Length
20 mm



BS0020 10015

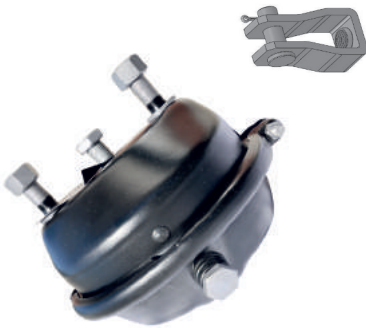
FOR OTHER TYPES OF BRAKE CHAMBER PLEASE CONTACT OUR COMPANY

Type	Ref. NR	O.E.M. NR	Araç / Vehicle
------	---------	-----------	----------------



BS0020 10020

20	423 105 9000		
STROKE 75			
M16X1.5			
Mil Boyu / Rod Lenght 186 mm			



BS0024 10023

24	423 106 9000		
STROKE 75			
M16X1.5			
Mil Boyu / Rod Lenght 186 mm			



BS0030 10037

30	423 107 9000		PROF
STROKE 75			
M16X1.5			
Mil Boyu / Rod Lenght 186 mm			



BS0030 10045

30		5K14266	
STROKE 65			
M16X1.5			
Mil Boyu / Rod Lenght 200 mm			

FOR OTHER TYPES OF BRAKE CHAMBER PLEASE CONTACT OUR COMPANY

Araç / Vehicle	O.E.M. NR	Ref. NR	Type
		925 464 5000	16/24 D/P STROKE 57/57 M16X1.5 Disk Boyu / Disc Lenght 15 mm
		925 464 5017 925 464 5050 925 464 5010	16/24 D/P STROKE 57/57 M16X1.5 Disk Boyu / Disc Lenght 15 mm
PROBUS		925 461 0320	24/24 D/P STROKE 57/57 M16X1.5 Disk Boyu / Disc Lenght 15 mm
GULERYUZ COBRA		925 461 0360	24/24 D/P STROKE 65/65 M22X1.5 Disk Boyu / Disc Lenght 15 mm


BP1624 20420

BP1624 20421

BP2424 20436

BP2424 20448

FOR OTHER TYPES OF BRAKE CHAMBER PLEASE CONTACT OUR COMPANY

Type	Ref. NR	O.E.M. NR	Araç / Vehicle
------	---------	-----------	----------------



BP3030 20463

30/30
D/P
STROKE
65/65
M16X1.5

Disk Boyu / Disc Length
15 mm



BP3030 10455

30/30
D/P
STROKE
65/65
M16X1.5

Mil Boyu / Rod Length
200 mm

5K59025-1M



BP9620 30401

9/6200
D/P
STROKE
44,5/44,5
M16X1.5

Boru Boyu / Tube Length
187 mm



BP9740 30405

9/7400
D/P
STROKE
44,5/44,5
M16X1.5

Boru Boyu / Tube Length
187 mm

FOR OTHER TYPES OF BRAKE CHAMBER PLEASE CONTACT OUR COMPANY

Araç / Vehicle	O.E.M. NR	Ref. NR	Type
----------------	-----------	---------	------

57RS304819

16/24

D/P

STROKE

53/53

M16X1.5

Boru Boyu / Tube Length

190 mm



BP1624 30413

